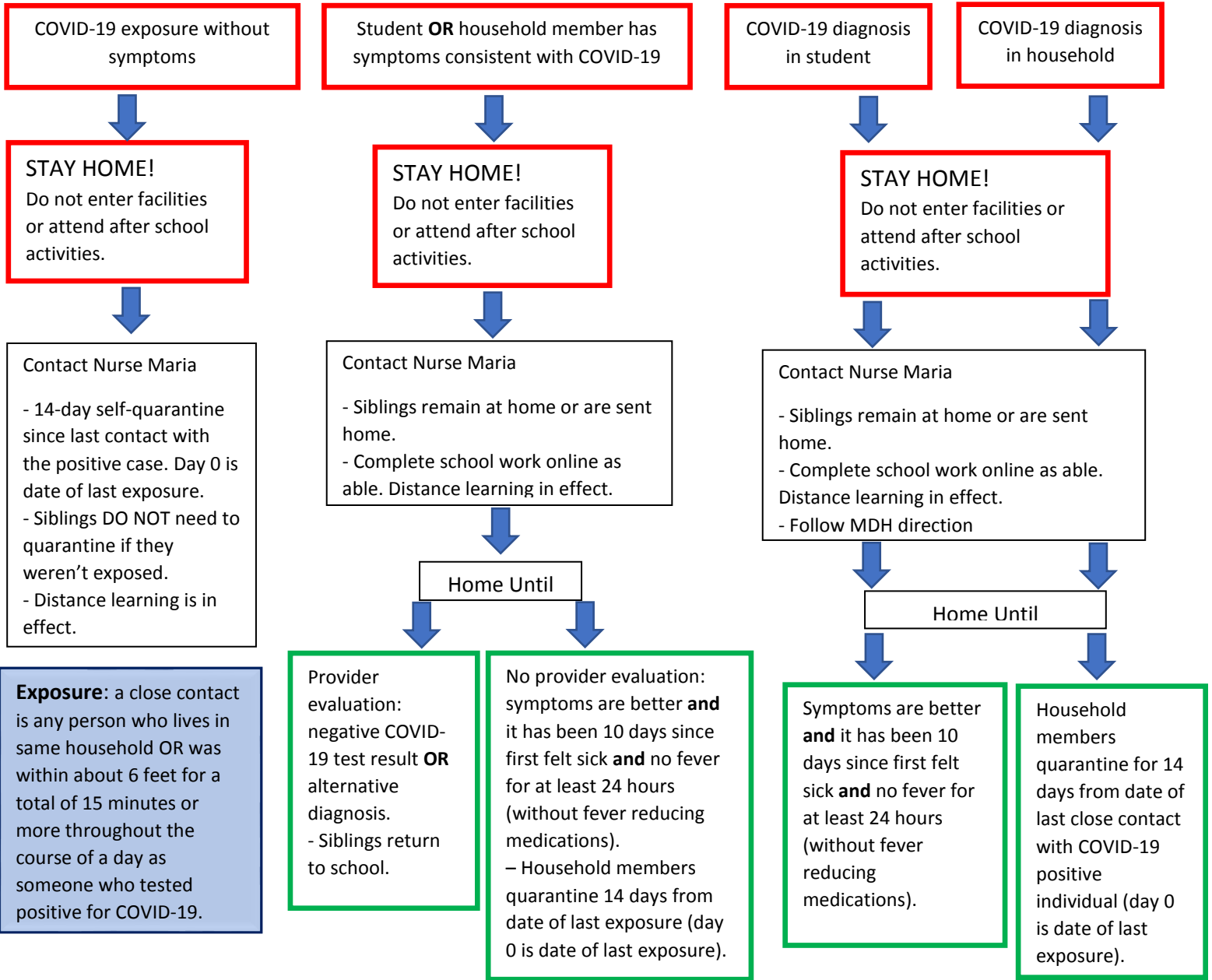




Decision Tree

St. Vincent de Paul Catholic School

Nurse Maria- 763-762-7381 marianikle@saintvdp.org



Exposure: a close contact is any person who lives in same household OR was within about 6 feet for a total of 15 minutes or more throughout the course of a day as someone who tested positive for COVID-19.

COVID-19 symptoms
One of the following:
- fever of 100.4°F or higher; new cough or a cough that gets worse; difficulty/hard time breathing; and new loss of taste or smell
OR
At least two of the following:
- sore throat; nausea; vomiting; diarrhea; chills; muscle pain; extreme fatigue; new severe headache; and new nasal congestion/stuffy or runny nose.

Distance Learning: the preparation and collection of homework/supplies and the expectation the student will complete school work given.

Travel: 14-day self-quarantine is recommended (day 0 is date of return from travel). Complete schoolwork online as able. Distance learning will **NOT** be in effect.

All illness related absences:
Contact Nurse Maria
763-762-7381 or
marianikle@saintvdp.org

All non-illness related absences:
Email:
nonmedicalabsence@saintvdp.org